

**FLANCE
EARLY LEARNING
CENTER**

"We've Graduated"

2019 Report Card



OUR MISSION: FLANCE PROVIDES EXCELLENCE BY EDUCATING AND NURTURING YOUNG CHILDREN, SUPPORTING FAMILIES AND STRENGTHENING COMMUNITY.

Dear Friends of Flance,

Every day at Flance Early Learning Center we grow in new ways. We are serving over 130 children, between the ages of six weeks to six years. It is our mission to ensure that all young children are physically healthy, academically prepared and have the social/emotional skills to succeed in school. Children that graduate from Flance are “kindergarten ready” and eager to learn.

We build confidence and curiosity by developing cognitive skills through language, literacy, and arts enrichment. Healthy, growing brains also require physically healthy bodies. Flance provides nutrition education and promotes physical activity with three different playgrounds. Children plant and harvest vegetables from our huge urban garden and our own Chef Leroy makes healthy baby food from scratch.

On behalf of our students, families, and community partners, we thank you for supporting Flance as we “graduate” to our 6th year of service to community. Together we can provide care and support to more infants, toddlers, preschoolers and their families in north St. Louis.

Stacey Liekweg

President, Board of Directors

“ We have loved having our child at Flance - the people, teachers, facility, and learning - it’s been very instrumental for us as new parents. ”
— Flance Parent



Thank You for Supporting the Children of Flance Early Learning Center

FRIENDS OF FLANCE

William Carson
Susan K. Glassman



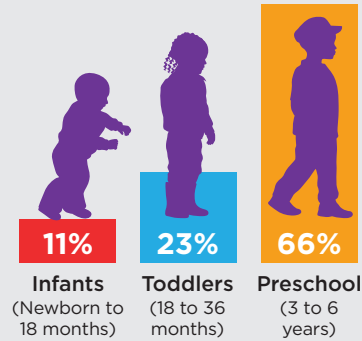
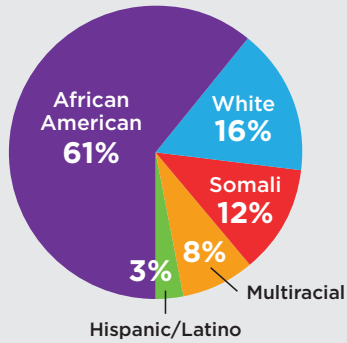
BOARD OF DIRECTORS

Stacey Liekweg, *President*
Shaughnessy Daniel, *Vice President*
Sandra M. Moore, *Treasurer*
Rose Anderson-Rice, *Secretary*
Patty Carleton
Lewis Chase
Crystal Allen Dallas
Alison Ferring
Evan W. Fowler
Randi Halbmaier
Paula D. Knight
Rachel Meyers
Britt Robertson
Lucendia Smith

COMMUNITY PARTNERS

Affinia Healthcare
AmeriCorps Vista
CDA
Foster Grandparents
HUD
McCormack Baron Salazar
Parents as Teachers
Ready Readers
St. Louis Public Library
STL Symphony
SIUE
Urban Harvest
Urban Strategies
Youth In Need

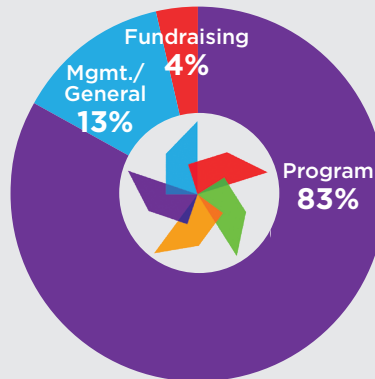
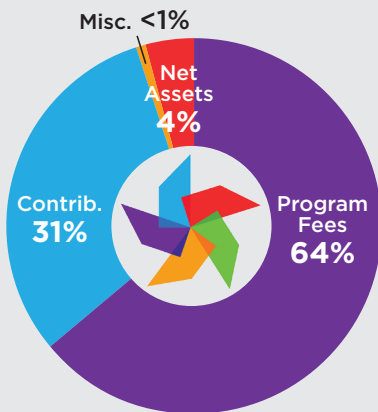
2019 Demographics of the Children In Our Care



Male
56%

Female
44%

2019 Financials



- Program Fees:** \$1,226,043
Private Tuition paid: \$443,427
Public Tuition reimbursed: \$782,616
- Contributions:** \$598,416
Individual: \$91,353
Foundation/Corp.: \$507,064
- Net Assets released from restrictions:** \$78,739
- Misc:** \$6,525

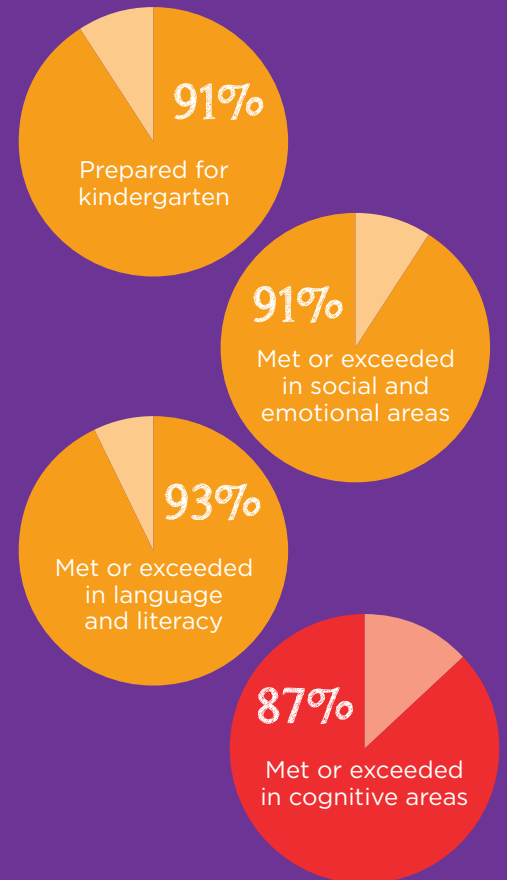
- Program:** \$1,517,114
- Management/General:** \$239,963
- Fundraising:** \$64,248

Total Revenues \$1,909,732

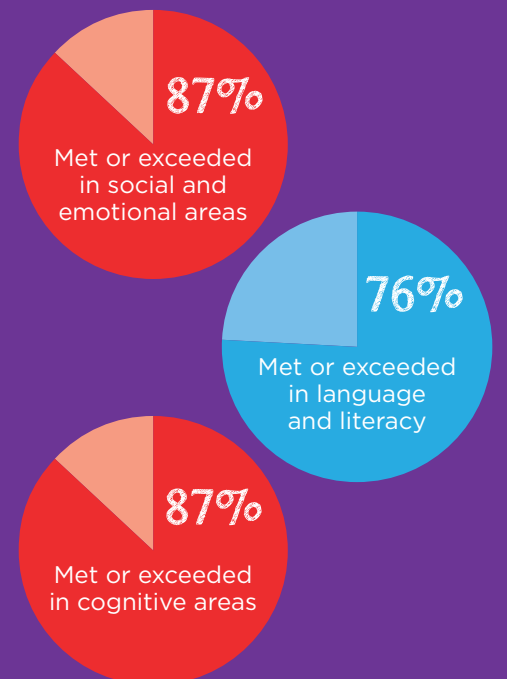
Total Expenses \$1,821,325

We served **197 children** and their families during 2019

2019 Outcomes Kindergarten Readiness¹

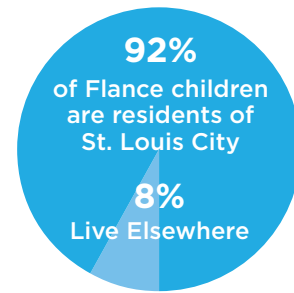
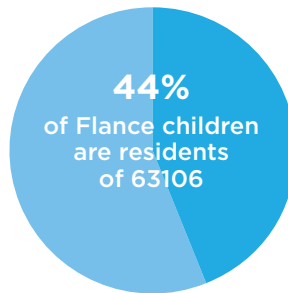
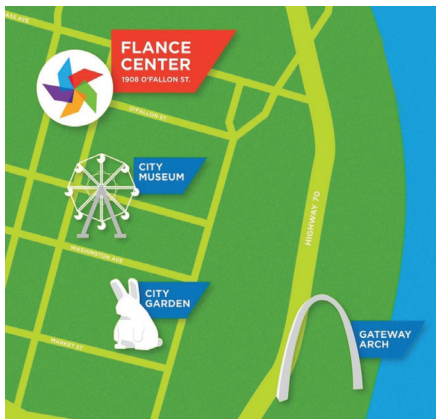


Infant & Toddler Development²



¹ Based on year-end DIAL-4 assessments
² Based on year-end milestones

Our Location Matters!



Children: Our holistic approach is centered on helping children by developing strong social and emotional skills. We serve children 6 weeks to 6 years in the City of St. Louis offering year-round early childhood education.

Families: We help build a strong, connected community dedicated to raising healthy and happy children.

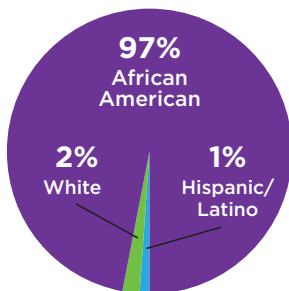
Community: Flance is a HUD designated EnVision Center which empowers individuals with opportunities to improve their economic outlook.

Our Mission } FLANCE PROVIDES EXCELLENCE BY EDUCATING AND NURTURING YOUNG CHILDREN, SUPPORTING FAMILIES AND STRENGTHENING COMMUNITY.

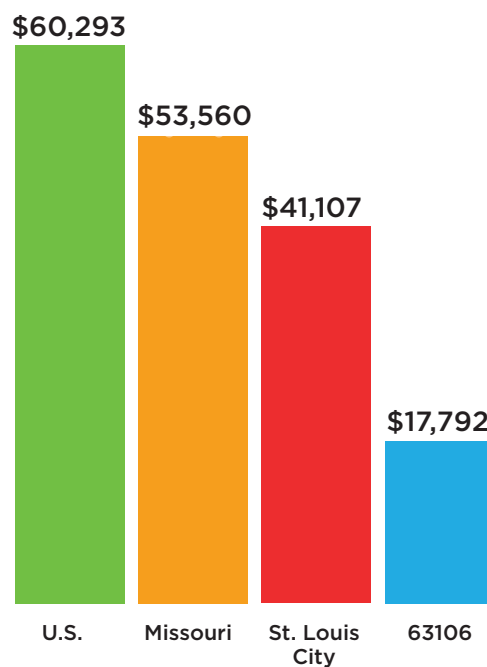
Why is our zip code important?

Because 63106 is one of the poorest zip codes in Missouri*

“Childhood, after all, is the first precious coin that poverty steals from a child.”
- Anthony Horowitz



Median Household Income Differences*



*Source: www.census.gov data



Visit: FlanceCenter.org



Like: [flancecenter](https://www.facebook.com/flancecenter)



Search: [Flance At A Glance](#)

1908 O'FALLON STREET, SAINT LOUIS, MO 63106 • (314) 881-0881